

# ILA device

## How it works:

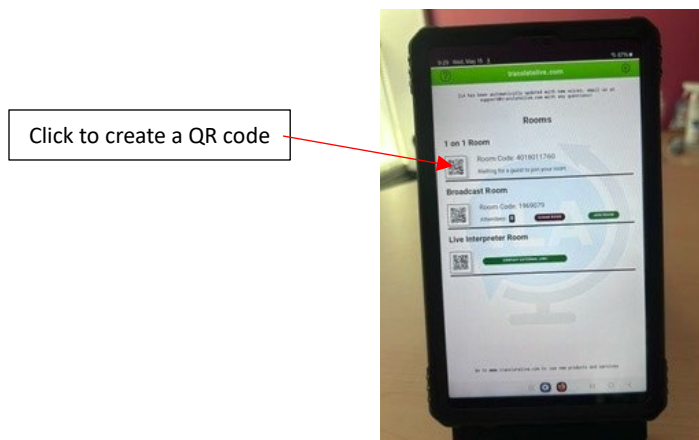
The dual-screen **ILA Pro** supports real-time, back-and-forth conversation in multiple languages. Simply approach the device, choose your language/dialect, and start communicating in seconds. Speak or type in your native language; the conversation is then instantly transcribed, shown, and voiced to participants in the language of their choice.

## One to one conversation:

- Turn on each side of the ILA using the power button on the top of the right side of the device, hold it down until you see the Samsung logo.
- One side is the “host” the other the “guest”. Click the ILA icon in the middle of both screens, this will start the conversation (this is only necessary when turning the device on, otherwise it will be ready for a guest to select their language).



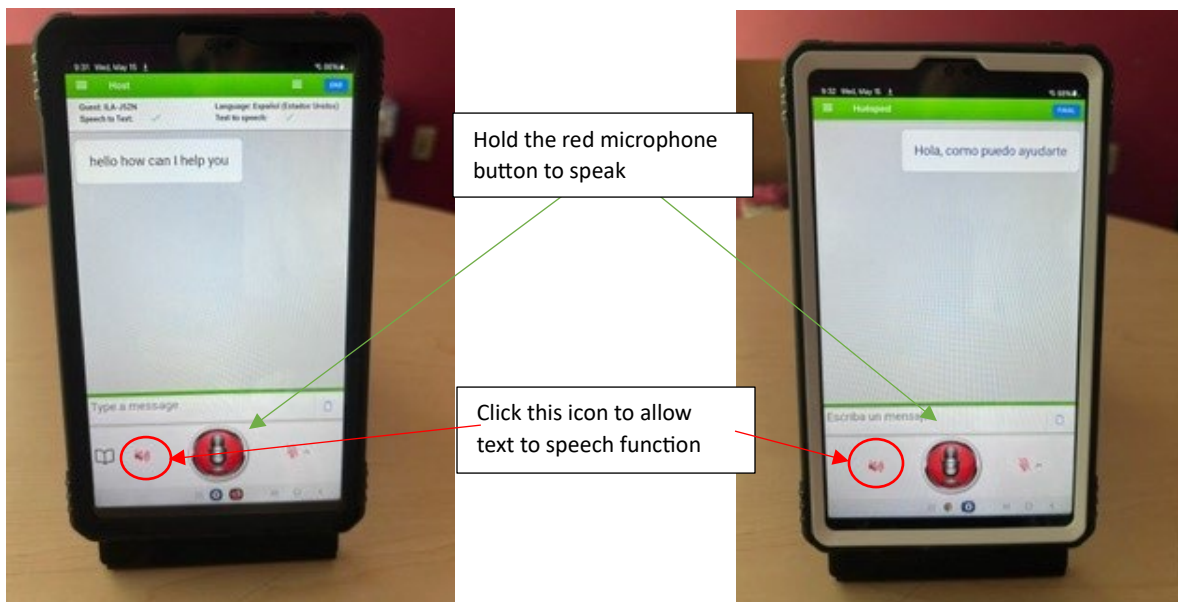
- The options for rooms will open on the host screen if the device has both one to one and broadcast mode available. (Once the guest selects their language, the one-to-one conversation will be activated.)



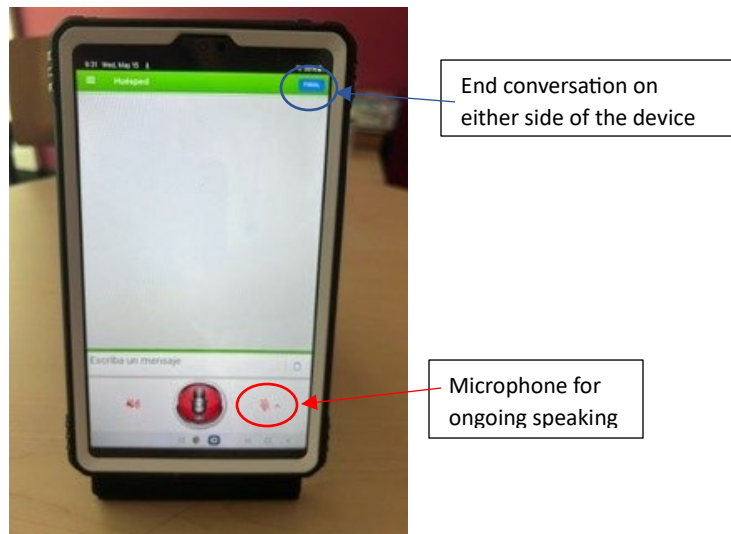
- The guest will see this screen and can now select their language from the list.



- Hold down the red microphone button to talk to the guest, it will turn green when you have activated the conversation mode. Release the button when finished and the ILA will type and/or speak the message to the guest. You and the guest will need to click the red volume icon with the line through it to activate the voice feature so the device will speak the conversation as well as type it, this will turn green when ready. The guest can respond on their side of the device by holding down the microphone button as well.



- You can also click the microphone icon with the line through it to activate an ongoing one-sided conversation. If you click this, it will not allow the guest to respond until you turn it off.

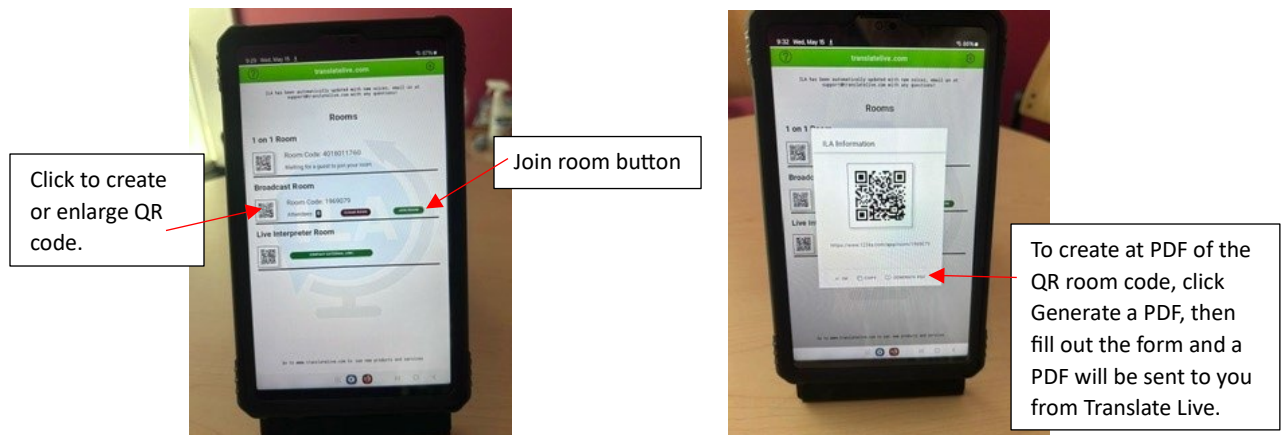


- When the conversation is over, click the blue end button in the top right of the screen, this will take the devices back to the home screen so you're ready to start a new conversation.
- You can also create a QR code to be posted or shown on the device by clicking the QR icon next to the Room code. This allows your guest to scan the code on their personal smart device. Their device will now become the "guest" side of the ILA.

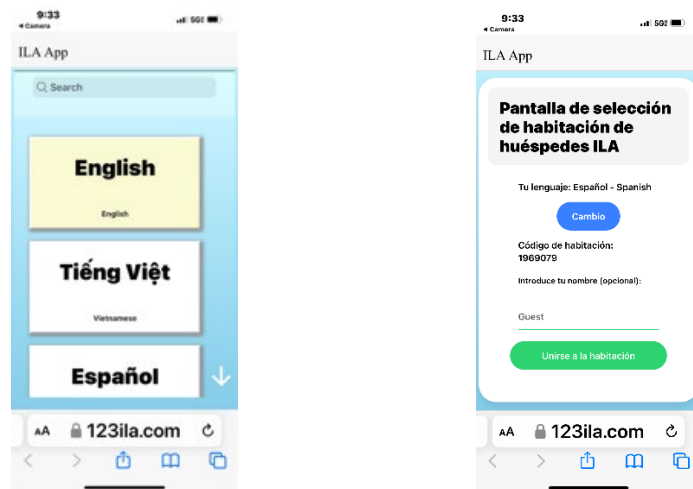
\*The ILA works best if you speak in short sentences and allow time for it to register what you've said and translate it. Remember this is an AI device, so it will not always be perfect.

## Broadcast mode:

- Broadcast mode allows you to create a room through a QR code so anyone attending a meeting or event can scan the QR code from their device and choose their language. A pdf of this QR code can be provided to post in multiple places in your meeting space or on a screen. (Each ILA device has its own room codes)

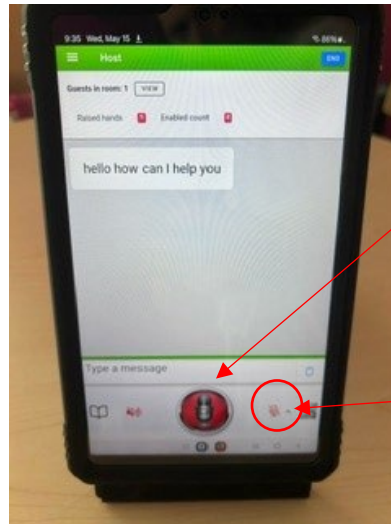


- Click the green Join room button on the host screen to start the broadcast session.
- When a guest scans the QR code, their personal device is now the guest side of the ILA. Anyone in attendance or with the QR code can now join the meeting in their own language. It will require them to choose their language, then enter their name, then they will be put into the “broadcast room”.



- There's no limit to the amount of people or languages in a broadcast room session.

- Once in the broadcast room, the host can click the red microphone button to speak each time or click the microphone icon with the line through it to speak continuously.



Click the red microphone to speak each time

Click this icon to speak continuously

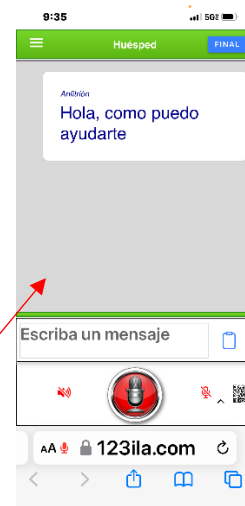
- Guests will not have the ability to respond unless you allow them to. They can click the hand icon to “raise their hand” to alert the host that they have a question or comment. The host can then “enable” them to be able to speak or type a message. The host can then “disable all” and they will not be allowed to comment or type unless the host enables that feature again.

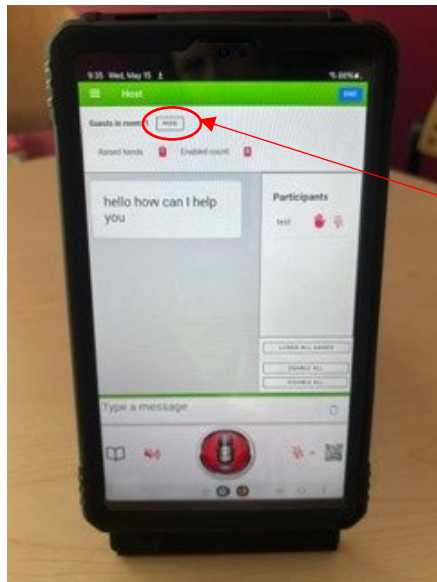


Guest personal device:

Click the hand icon to alert the host

Guest side when it has been enabled.

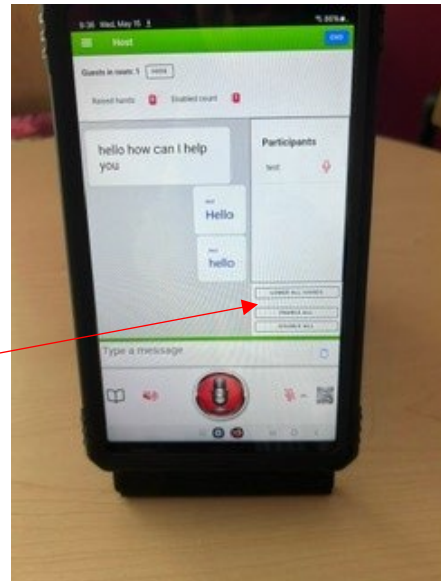




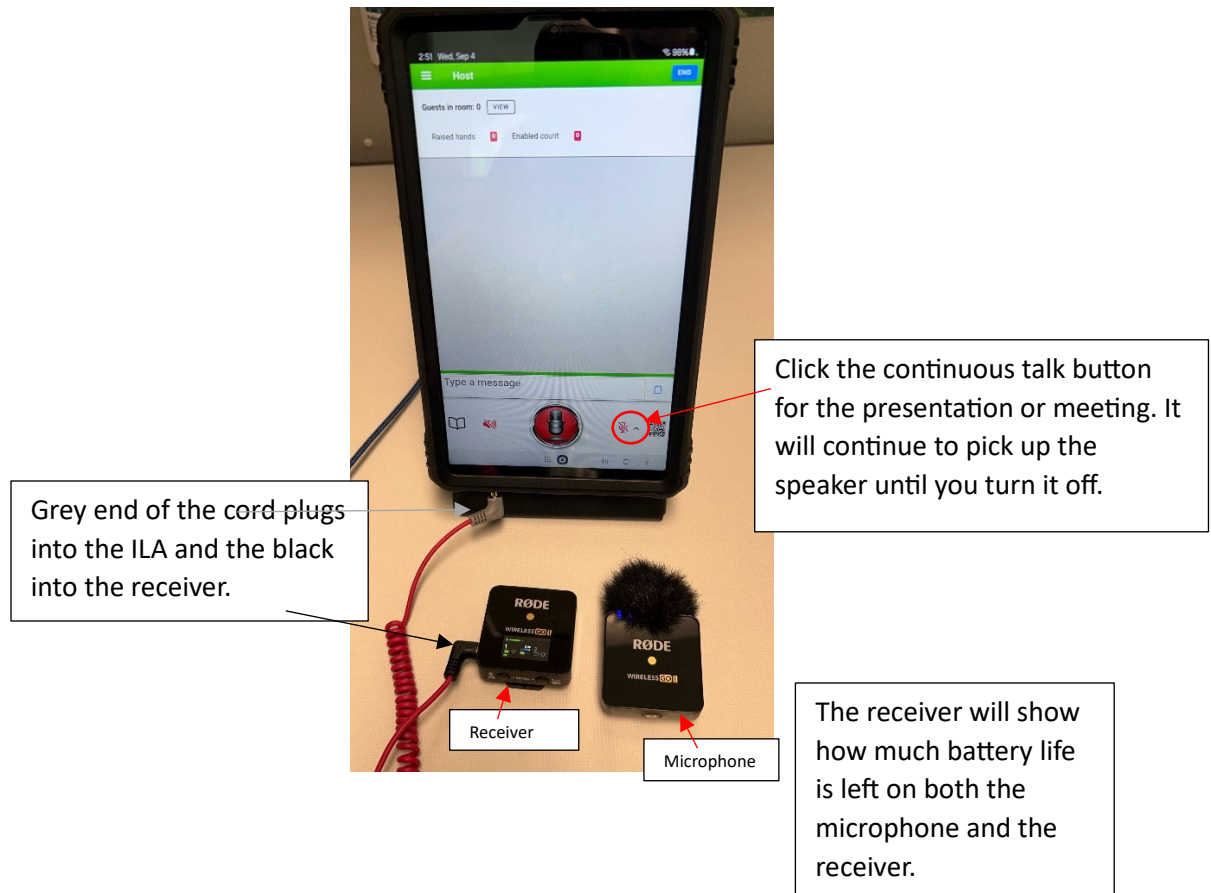
Host device:

Click view to see the participant list and who has a "hand" raised.

Enable and disable participants abilities



- The sound will be turned off for the guests, so they can only read the messages, but not hear them. The guest can turn on the sound for themselves if they have headphones to listen to.
- We have also found that the addition of the RODE microphone makes things clearer and more concise. You can plug it into a sound system, or just attach it to a microphone you're already using, so as the presenter is speaking it feeds directly into the ILA device and doesn't pick up surrounding sounds.
  - The RODE receiver will be connected to the ILA device (grey side of the cord into the ILA host side, black side into the receiver)
  - Presenter can wear the RODE microphone, or it can be connected to an existing microphone at a podium (there are two RODE microphones, so two presenters can use them if needed). There has been huge success in attaching (Velcro works great!) the RODE microphone onto the main microphone used for a presentation, then everything being said goes through both the sound system and directly through the ILA device.
  - Use the continuous talk button for the presentation.
  - Click the blue end button when your presentation is done and everyone will be removed from the session.



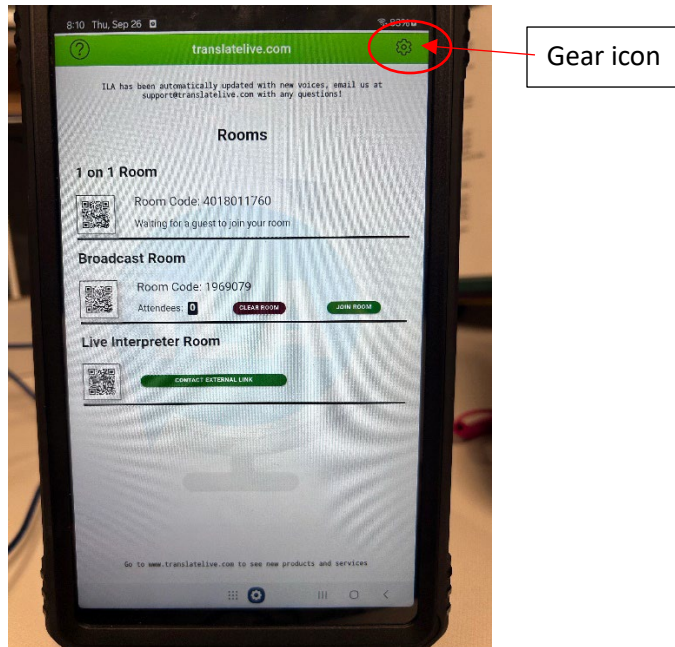
\*The ILA works best if you speak in short sentences and allow time for it to register what you've said and translate it. Remember this is an AI device, so it will not always be perfect.



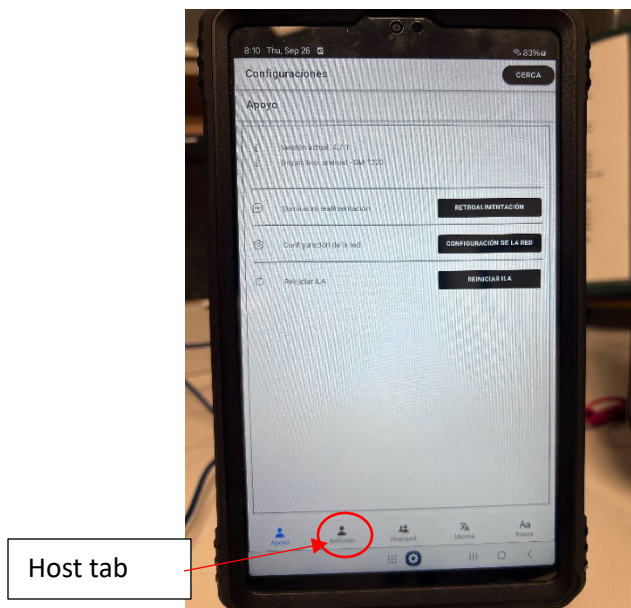
## Changing Languages on the Host device:

If you would like to change the language on the Host device, or find it already set to a different language, follow these steps:

- From the host screen, click the gear icon in the upper right-hand corner.

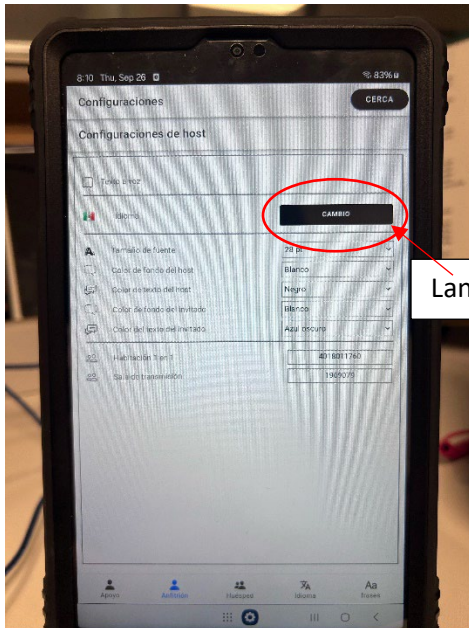


- Next go to the host tab at the bottom of the screen.

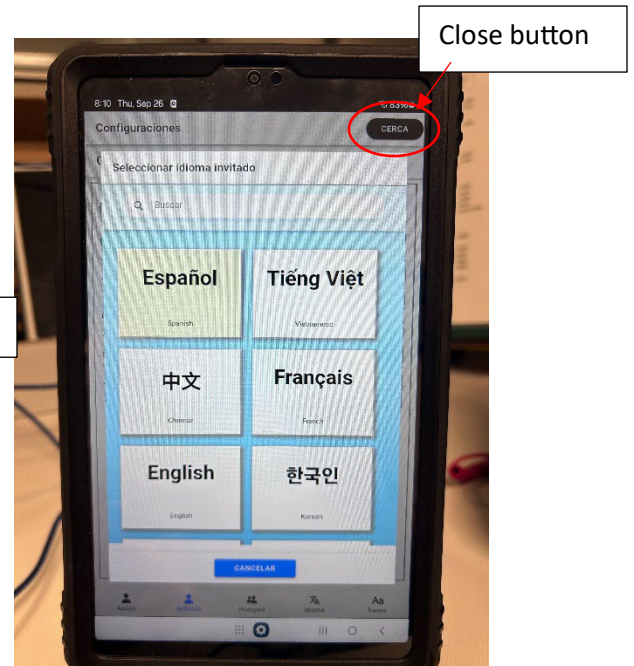




- Now you can click language and select the language/dialect you would like for the host device. When you've updated the language, click the close button to return to the main Host screen.



Language button

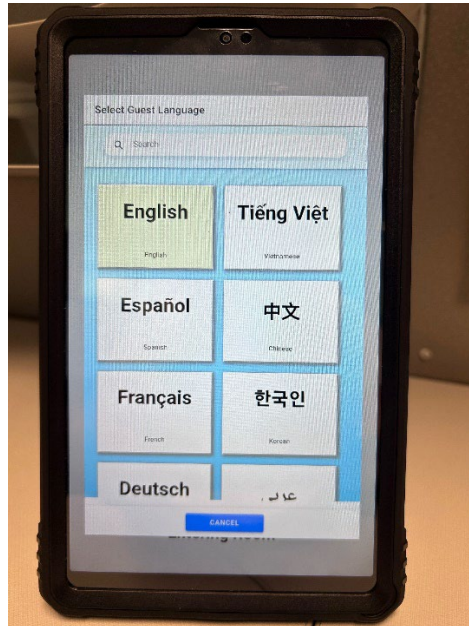


Close button

### **ROAM device instructions:**

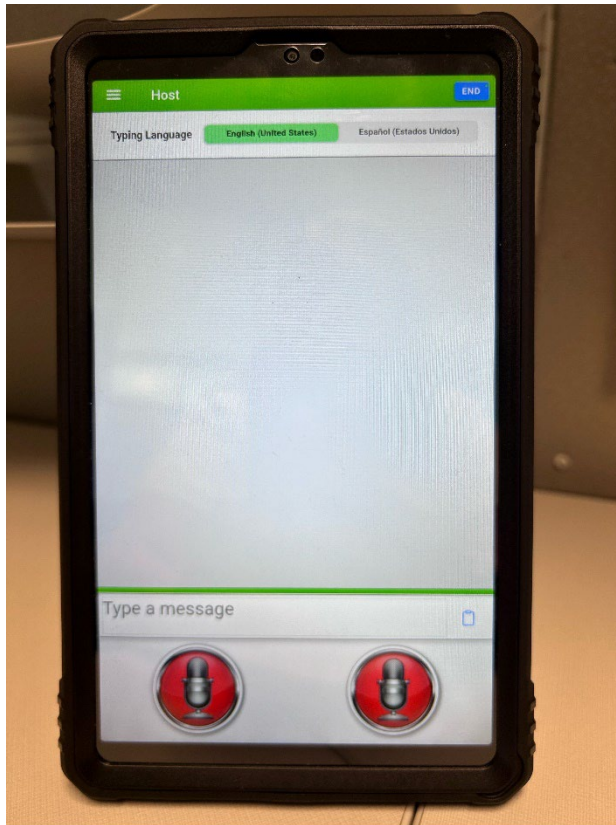
The ROAM device is a single sided device that is more compact and still has the capabilities that the ILA does. It's a great device if you will be sitting next to someone or need to use it on the go.

- The ROAM will open to the ILA Host screen. Click the ILA icon at the top of the screen and it will take you to the “Rooms” menu. From here you can choose Broadcast room to hold a meeting or give a presentation (same instructions as the ILA) or choose Single user room to have a one-to-one conversation.
- If you select Single user room, the guest screen will open and they will be able to choose their language.



- Once the guest has selected their language a single screen will open with two microphones at the bottom-one for the host and one for the guest. Each person will hold down their button to speak and the entire conversation will pop up on the screen.

- Click the blue end button in the top right to end your conversation. This will take you back to the “Rooms” menu to start a new conversation.



**\*\*Approved disclaimer when using the ILA in English and our top 5 languages spoken in the district:**

*TRANSLATION AND INTERPRETATION IS BEING PROVIDED SOLELY FOR THE CONVENIENCE OF OUR FAMILIES AND GUESTS. AI MAY NOT ALWAYS TRANSLATE ACCURATELY DUE TO LIMITATIONS OF THE MACHINE-GENERATED SERVICE. EVERETT PUBLIC SCHOOLS DOES NOT REVIEW FOR ACCURACY AND MAKES NO REPRESENTATIONS OR WARRANTIES REGARDING THE ACCURACY, RELIABILITY, TIMELINESS, OR COMPLETENESS OF ANY INFORMATION THAT APPEARS IN THE TRANSLATION.*

### **Arabic:**

يتم توفير الترجمة التحريرية والفورية فقط من أجل راحة عائلاتنا وضيوفنا. قد لا يترجم النكاه الاصطناعي دائمًا بدقة بسبب القيود المفروضة على الخدمة التي يتم إنشاؤها بواسطة الآلة. لا تقوم مدارس إيفريت العامة بمراجعة الدقة ولا تقدم أي تعهدات أو ضمانات فيما يتعلق بدقة أو موثوقية أو توقيت أو اكتمال أي معلومات تظهر في الترجمة.

### **Russian:**

*Письменный и устный перевод предоставляется исключительно для удобства наших семей и гостей. Искусственный интеллект (AI) может НЕ всегда переводить точно из-за ограничений создаваемого машиной текста. Государственные школы Эверетт (EVERETT PUBLIC SCHOOLS) НЕ проверяют точность и НЕ дают никаких заверений или гарантий относительно точности, надежности, своевременности или полноты любой информации, КОТОРАЯ ПРЕДОСТАВЛЯЕТСЯ В ТАКОМ ПЕРЕВОДЕ.*

### **Spanish:**

*SE ESTÁ PROPORCIONANDO TRADUCCIÓN E INTERPRETACIÓN ÚNICAMENTE PARA LA CONVENIENCIA DE NUESTRAS FAMILIAS E INVITADOS. AI PUEDE NO SIEMPRE TRADUCIR CORRECTAMENTE DEBIDO A LAS LIMITACIONES DE UN SERVICIO GENERADO POR UNA MÁQUINA. LAS ESCUELAS PÚBLICAS DE EVERETT NO REVISAN SU PRECISIÓN, Y NO REPRESENTAN NI GARANTIZAN LA PRECISIÓN, FIABILIDAD, PUNTUALIDAD O TOTALIDAD DE CUALQUIER INFORMACIÓN QUE APAREZCA EN LA TRADUCCIÓN.*

## Ukrainian:

*ПЕРЕКЛАД І ТЛУМАЧЕННЯ НАДАЮТЬСЯ ВИКЛЮЧНО ДЛЯ ЗРУЧНОСТІ СІМЕЙ ТА ГОСТЕЙ. ШТУЧНИЙ ІНТЕЛЕКТ НЕ ЗАВЖДИ МОЖЕ ТОЧНО ПЕРЕКЛАДАТИ ЧЕРЕЗ ОБМЕЖЕННЯ МАШИННОГО СЕРВІСУ ПЕРЕКЛАДУ. ШКОЛИ EVERETT НЕ ПЕРЕВІРЯЮТЬ ТОЧНІСТЬ ПЕРЕКЛАДУ І НЕ НАДАЮТЬ ЖОДНИХ ГАРАНТІЙ ЩОДО ТОЧНОСТІ, НАДІЙНОСТІ, СВОЄЧАСНОСТІ ЧИ ПОВНОТИ БУДЬ-ЯКОЇ ІНФОРМАЦІЇ, ЩО НАДАЄТЬСЯ У ПЕРЕКЛАДІ.*

## Vietnamese:

*BẢN DỊCH VÀ PHIÊN DỊCH ĐƯỢC CUNG CẤP CHỈ CHO SỰ THUẬN TIỆN CỦA GIA ĐÌNH VÀ KHÁCH CỦA CHÚNG TÔI.*

*TRÍ TỰỆ NHÂN TẠO KHÔNG PHẢI LÚC NÀO CŨNG CÓ THỂ DỊCH CHÍNH XÁC DO NHỮNG HẠN CHẾ CỦA DỊCH VỤ DO MÁY TẠO RA.*

*TRƯỜNG CÔNG LẬP EVERETT KHÔNG XEM XÉT TÍNH CHÍNH XÁC VÀ KHÔNG ĐƯA RA BẤT KỲ TUYÊN BỐ HOẶC BẢO ĐẢM NÀO VỀ TÍNH CHÍNH XÁC, ĐỘ TIN CẬY, TÍNH KỊP THỜI HOẶC TÍNH ĐẦY ĐỦ CỦA BẤT KỲ THÔNG TIN NÀO XUẤT HIỆN TRONG BẢN DỊCH.*

**\*PLEASE CONTACT MEGAN RUDE, LANGUAGE ACCESS COORDINATOR WITH ANY QUESTIONS AT [MRUDE@EVERETTSCHOOLSDISTRICT2000.ORG](mailto:MRUDE@EVERETTSCHOOLSDISTRICT2000.ORG) OR 4247.**